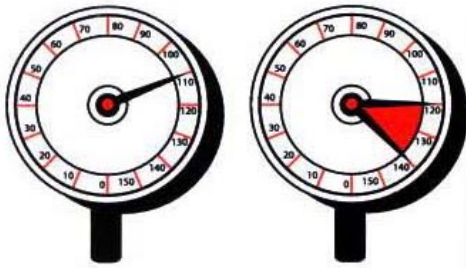


Installation Guidelines Subfloor To Concrete

EXAMPLE

Tool Air

Tank Air



Compressor must maintain pressure and volume above tool requirement.

Regulate air to tool at constant pressure

Always Have Adequate Air Pressure And Volume At The Tool

The air compressor and hose assembly must deliver **SUFFICIENT** and **CONSTANT** pressure as well as adequate **VOLUME** of air to drive pins properly. The lowest pressure at the compressor must be higher than the pressure needed to drive the pins. It should be regulated down to the pressure required at the tool.

DO NOT OPERATE THE TOOL AT PRESSURES HIGHER THAN REQUIRED FOR A SUCCESSFUL DRIVE.

Average Pressure Required

Green Residential Slab

Old/Cured Commercial Slab

95 - 100 psi

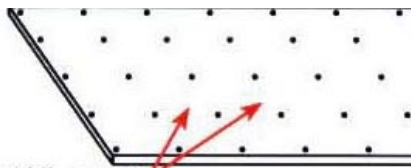


130 - 140 psi

Volume Required

5 drives per cubic foot at pressure.

(See air system guidelines for additional information)

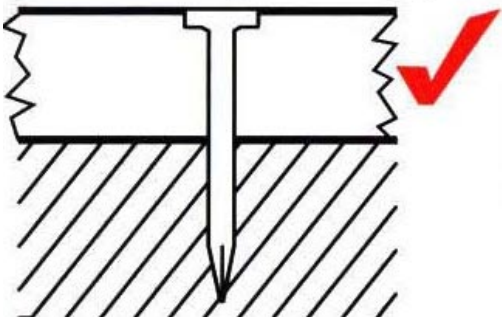


Space 12" apart

Allow 1.5 Pins Per Square Foot.

Example:

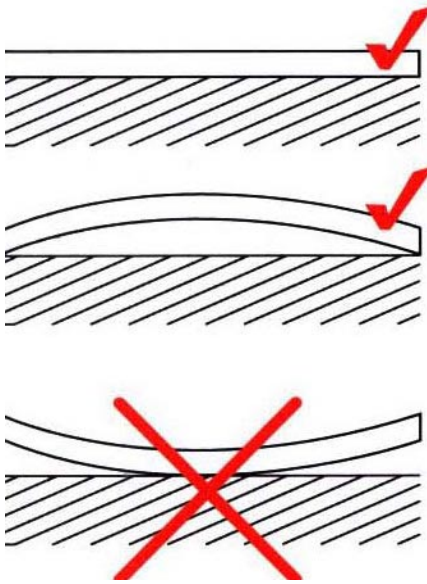
1000 sq. ft. = 1500 pins



Fastening Required

- 144 shank hardened steel pin.
- Length - as required to drive fastener 3/4" penetration into concrete.
- Recommend one fastener per square foot.
- Fastener should be driven with slight countersink.

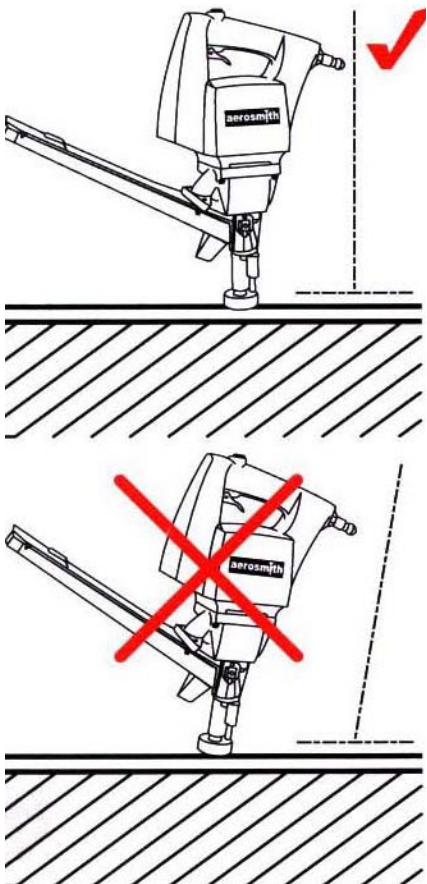
DO NOT OVERDRIVE AS SHEATHING PULL OVER WILL BE REDUCED.



Sheathing Should Be In Contact With Concrete When Fastened.

If bowed, the sheet should be installed crown side up. Usually, the weight of the operator at the center will be sufficient to bring the sheathing in contact with concrete. Fastening should be from center outward to perimeter.

Note: If badly distorted an anchor may be required in the center to bring into contact with concrete or the sheet should not be utilized.



Maintain Tool in Upright Position For Fastener Drive.

The pin should be driven perpendicular to the concrete to assure proper penetration. Driving at an angle may cause spalling of concrete or fishhook of fastener.

Always maintain a firm grip on tool when driving.



Lubricate, Tighten Screws And Clean Tool Routinely.

(See tool operating instructions and manual for details.)

USE ONLY GENUINE AEROSMITH PARTS FOR TOOL MAINTENANCE AND REPAIR.